

JEDEC STANDARD

**1.0 V +/- 0.1 V (Normal Range) and
0.7 V - 1.1 V (Wide Range) Power Supply
Voltage and Interface Standard for
Nonterminated Digital Integrated Circuits**

JESD8-14A.01

(Minor revision of JES8-14A, November 2005)

SEPTEMBER 2007

JEDEC SOLID STATE TECHNOLOGY ASSOCIATION



NOTICE

JEDEC standards and publications contain material that has been prepared, reviewed, and approved through the JEDEC Council level and subsequently reviewed and approved by the EIA General Counsel.

JEDEC standards and publications are designed to serve the public interest through eliminating misunderstandings between manufacturers and purchasers, facilitating interchangeability and improvement of products, and assisting the purchaser in selecting and obtaining with minimum delay the proper product for use by those other than JEDEC members, whether the standard is to be used either domestically or internationally.

JEDEC standards and publications are adopted without regard to whether or not their adoption may involve patents or articles, materials, or processes. By such action JEDEC does not assume any liability to any patent owner, nor does it assume any obligation whatever to parties adopting the JEDEC standards or publications.

The information included in JEDEC standards and publications represents a sound approach to product specification and application, principally from the solid state device manufacturer viewpoint. Within the

No claims to be in conformance with this standard may be made unless all requirements stated in the standard are met.

Inquiries, comments, and suggestions relative to the content of this JEDEC standard or publication should be addressed to JEDEC Solid State Technology Association, 2500 Wilson Boulevard, Arlington, VA 22201-3834, (703)907-7559 or www.jedec.org.

Published by

©JEDEC Solid State Technology Association 2007
2500 Wilson Boulevard
Arlington, VA 22201-3834

This document may be downloaded free of charge, however JEDEC retains the copyright on this material.
By downloading this file the individual agrees not to charge for or resell the resulting material.

**Price: Please refer to the current
Catalog of JEDEC Engineering Standards and Publications at www.jedec.org**

Printed in the U.S.A.
All rights reserved

PLEASE!

DON'T VIOLATE
THE
LAW!

This document is copyrighted by JEDEC and may not be
reproduced without permission.

Organizations may obtain permission to reproduce a limited number of copies
through entering into a license agreement. For information, contact:

©JEDEC Solid State Technology Association
2500 Wilson Boulevard
Arlington, Virginia 22201-3834
or call (703) 907-7559

1.0 V +/- 0.1 V (NORMAL RANGE) AND 0.7 V - 1.1 V (WIDE RANGE) POWER SUPPLY VOLTAGE AND INTERFACE STANDARD FOR NONTERMINATED DIGITAL INTEGRATED CIRCUITS

(From JEDEC Board Ballot JCB-01-102 and JCB-05-81, formulated under the cognizance of the JC-16 Committee on Interface Technology.)

1 Scope

This standard defines power supply voltage ranges, dc interface and switching parameters for a high speed, low voltage family of nonterminated digital circuits driving/driven by parts of the same family, or mixed families which comply with the input receiver specifications. The specifications in this standard represent a minimum set of interface specifications for CMOS compatible circuits.

The purpose of this standard is to provide a standard of specification for uniformity, multiplicity of sources, elimination of confusion, and ease of device specification and design by users. Clause 2.3 describes normal dc electrical characteristics and clause 2.4 (added in revision A) describes the optional characteristics for Schmitt trigger operation.

2 Standard specifications

All voltages are referenced to ground except where noted.

2.1 Absolute maximum continuous ratings

Supply Voltage, V_{DD}	-0.4 V to 1.4 V
dc Input Voltage, V_{IN} (except I/O pins) (note 1, 2 and 3)	-0.4 V to $V_{DD} + 0.4$ V
dc Output Voltage, V_{OUT} (including I/O pins) (note 2 and 3)	-0.4 V to $V_{DD} + 0.4$ V
dc Input Diode Current, I_{IK} ($V_I < 0$ or $V_I > V_{DD}$)	+/- 20 mA
dc Output Diode Current, I_{OK} ($V_O < 0$ or $V_O > V_{DD}$)	+/- 20 mA

NOTE 1 Absolute maximum continuous ratings are those values beyond which damage to the device may occur. Exposure to these conditions or conditions beyond those indicated may adversely affect device reliability. Functional operation under absolute maximum conditions is not implied.

NOTE 2 Not to exceed 1.4 V.

NOTE 3 The maximum voltage allowed between any two signal (input, output or input/output) pins or any signal pin and V_{DD} must be less than 1.6 V.

2 Standard specifications (cont'd)

2.2 Recommended operating conditions

2.2.1 Normal range

Symbol	Parameter	Operating Range
V_{DD}	Power Supply Voltage	0.9 V to 1.1 V
T_A	Operating Temperature	Note 1

NOTE 1 Specified by manufacture to be commercial, industrial, and/or military grade.

2.2.2 Wide range

Symbol	Parameter	Operating Range
V_{DD}	Power Supply Voltage	0.7 V to 1.1 V
T_A	Operating Temperature	Note 1

NOTE 1 Specified by manufacture to be commercial, industrial, and/or military grade.

2.3 DC electrical characteristics

2.3.1 Normal range

[$V_{DD(min)}$ = 0.9 V and $V_{DD(max)}$ = 1.1 V across operating temperature range - Note 1 and 2]

Symbol	Parameter	Test Condition	MIN	MAX	Unit
V_{DD}	Supply Voltage		0.9	1.1	V
V_{IH}	Input High Voltage		$0.65 V_{DD}$	$V_{DD} + 0.2$	V
V_{IL}	Input Low Voltage		-0.2	$0.35 V_{DD}$	V
V_{OH}	Output High Voltage	$I_{OH} = -2 \text{ mA}$	$0.75 V_{DD}$		V
V_{OL}	Output Low Voltage	$I_{OL} = 2 \text{ mA}$		$0.25 V_{DD}$	V

NOTE 1 V_{DD} of the sending and receiving devices must track within 0.1 V to maintain adequate dc margins.

NOTE 2 For V_{IH} and V_{IL} , V_{DD} refers to the receiving device. For V_{OH} and V_{OL} , V_{DD} refers to the sending device.

2.3 DC electrical characteristics (cont'd)

2.3.2 Wide range

[$V_{DD(min)} = 0.7$ V and $V_{DD(max)} = 1.1$ V across operating temperature range - Note 1 and 2]

Symbol	Parameter	Test Condition	MIN	MAX	Unit
V_{DD}	Supply Voltage		0.7	1.1	V
V_{IH}	Input High Voltage		$0.7 V_{DD}$	$V_{DD} + 0.2$	V
V_{IL}	Input Low Voltage		-0.2	$0.3 V_{DD}$	V
V_{OH}	Output High Voltage	$I_{OH} = -100$ uA	$V_{DD} - 0.1$		V
V_{OL}	Output Low Voltage	$I_{OL} = 100$ uA		0.1	V

NOTE 1 V_{DD} of the sending and receiving devices must track within 0.1 V to maintain adequate dc margins.

NOTE 2 For V_{IH} and V_{IL} , V_{DD} refers to the receiving device. For V_{OH} and V_{OL} , V_{DD} refers to the sending device.

2.4 Optional DC electrical characteristics for Schmitt trigger operation

2.4.1 Optional Schmitt trigger operation - Normal range

[$V_{DD(min)} = 0.9$ V and $V_{DD(max)} = 1.1$ V across operating temperature range - Note 1 and 2]

Symbol	Parameter	Test Condition	MIN	MAX	Unit
V_{DD}	Supply Voltage	---	0.9	1.1	V
$V_{t+} (V_P)$	Positive Going Threshold Voltage	$V_{OUT} \geq V_{OH(min)}$	$0.4 V_{DD}$	$0.7 V_{DD}$	V
$V_{t-} (V_n)$	Negative going Threshold Voltage	$V_{OUT} \leq V_{OL(max)}$	$0.3 V_{DD}$	$0.6 V_{DD}$	V
$V_h (\Delta V_t)$	Hysteresis Voltage	$V_{t+} - V_{t-}$	$0.1 V_{DD}$	$0.4 V_{DD}$	V
V_{OH}	Output High Voltage	$I_{OH} = -2$ mA	$0.75 V_{DD}$		V
V_{OL}	Output Low Voltage	$I_{OL} = 2$ mA		$0.25 V_{DD}$	V

NOTE 1 V_{DD} of the sending and receiving devices must track within 0.1 V to maintain adequate dc margins.

NOTE 2 For $V_{t+} (V_P)$ and $V_{t-} (V_n)$, V_{DD} refers to the receiving device. For V_{OH} and V_{OL} , V_{DD} refers to the sending device.

2.4 Optional DC electrical characteristics for Schmitt trigger operation (cont'd)

2.4.2 Optional Schmitt trigger operation - Wide range

[$V_{DD(min)} = 0.7\text{ V}$ and $V_{DD(max)} = 1.1\text{ V}$ across operating temperature range - Note 1 and 2]

Symbol	Parameter	Test Condition	MIN	MAX	Unit
V_{DD}	Supply Voltage	---	0.7	1.1	V
$V_{t+} (V_P)$	Positive Going Threshold Voltage	$V_{OUT} \geq V_{OH(min)}$	$0.35 V_{DD}$	$0.75 V_{DD}$	V
$V_{t-} (V_n)$	Negative going Threshold Voltage	$V_{OUT} \leq V_{OL(max)}$	$0.25 V_{DD}$	$0.65 V_{DD}$	V
$V_h (\Delta V_t)$	Hysteresis Voltage	$V_{t+} - V_{t-}$	$0.1 V_{DD}$	$0.5 V_{DD}$	V
V_{OH}	Output High Voltage	$I_{OH} = -100\text{ uA}$	$V_{DD} - 0.1$		V
V_{OL}	Output Low Voltage	$I_{OL} = 100\text{ uA}$		$0.1 V_{DD}$	V

NOTE 1 V_{DD} of the sending and receiving devices must track within 0.1 V to maintain adequate dc margins.

NOTE 2 For $V_{t+} (V_P)$ and $V_{t-} (V_n)$, V_{DD} refers to the receiving device. For V_{OH} and V_{OL} , V_{DD} refers to the sending device.

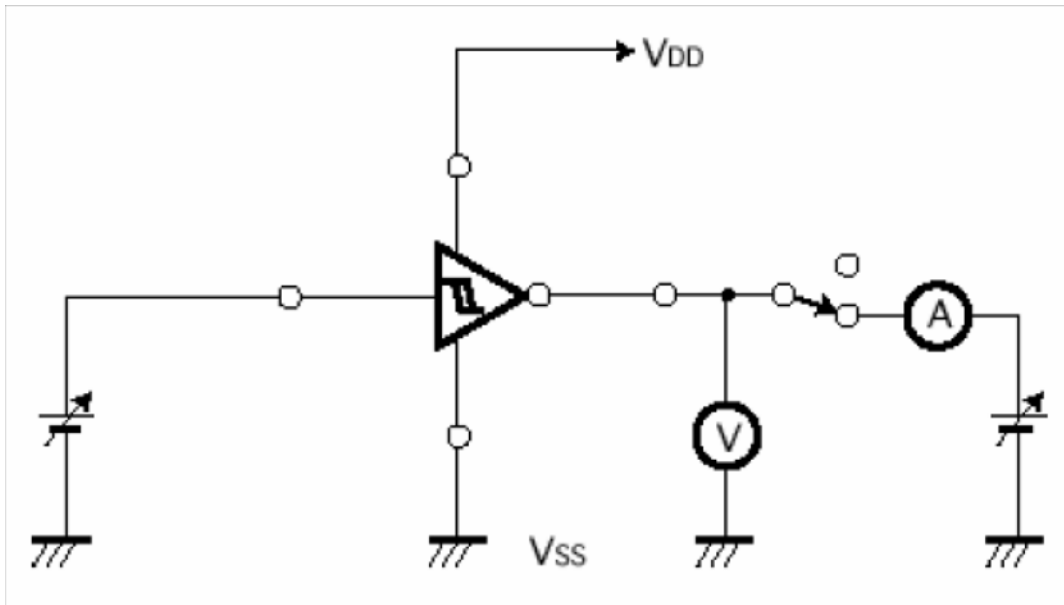
3 Test conditions for Optional Schmitt trigger operation

3.1 Positive Going Threshold Voltage: $V_{t+} (V_P)$

As the input signal is raised from a ground level in the measurement circuit shown in Figure 1, the input voltage value at which the output logic changed is determined as $V_{t+} (V_P)$.

3.2 Negative Going Threshold Voltage: $V_{t-} (V_n)$

As the input signal is dropped from a power supply voltage level in the measurement circuit shown in Figure 1, the input voltage value at which the output logic changed is determined as $V_{t-} (V_n)$.

3 Test conditions for Optional Schmitt trigger operation (cont'd)**Figure 1 — DC characteristic measurement circuit of Schmitt Trigger input**

Annex A (informative) Differences between JESD8-14A.01 and JESD8-14A

This table briefly describes most of the changes made to entries that appear in this standard, JESD8-14A.01, compared to its predecessor, JESD8-14A (November 2005). If the change to a concept involves any words added or deleted (excluding deletion of accidentally repeated words), it is included. Some punctuation changes are not included.

Page Description of change

- | | |
|---|---|
| 3 | The table in Section 2.4.1 was updated to properly reflect that the V_{OH} and V_{OL} Test Conditions should be in mA not uA. |
|---|---|

A.1 Differences between JESD8-14A and JESD8-14

This table briefly describes most of the changes made to entries that appear in this standard, JESD8-14A, compared to its predecessor, JESD8-14 (December 2001). If the change to a concept involves any words added or deleted (excluding deletion of accidentally repeated words), it is included. Some punctuation changes are not included.

Page Description of change

- | | |
|---|-----------------------------------|
| 3 | Added subclauses 2.4 and 2.4.1 |
| 4 | Added subclause 2.4.2 |
| 4 | Added Clause 3 and its subclauses |
| 5 | Added Figure 1 |



Standard Improvement Form

JEDEC JESD8-14A.01

The purpose of this form is to provide the Technical Committees of JEDEC with input from the industry regarding usage of the subject standard. Individuals or companies are invited to submit comments to JEDEC. All comments will be collected and dispersed to the appropriate committee(s).

If you can provide input, please complete this form (it can be edited in Acrobat Exchange) and return to:

JEDEC

Attn: Publications Department

2500 Wilson Blvd. Suite 220

Arlington, VA 22201-3834

Fax: 703.907.7583

1. I recommend changes to the following:

☐ Requirement, paragraph number _____

☐ Test method number _____ Paragraph number _____

The referenced paragraph number has proven to be:

☐ Unclear ☐ Too Rigid ☐ In Error

☐ Other _____

2. Recommendations for correction:

3. Other suggestions for document improvement:

Submitted by

Name: _____

Phone: _____

Company: _____

E-mail: _____

Address: _____

City/State/Zip: _____

Date: _____

JEDEC